



KZN Government Strategic Posture on Gender Based Violence and Femicide Programme in KZN province



7 JULY 2021



PURPOSE

To appraise the Provincial Council on AIDS of the KZN Government posture on Provincial Gender Based Violence and Femicide (GBVF) in KZN



KWAZULU-NATAL PROVINCE

OFFICE OF THE PREMIER
REPUBLIC OF SOUTH AFRICA



TABLE OF CONTENTS

1. Background
2. KZN GBVF trajectory
3. Summary of GBVF Strategy
4. Institutionalization of GBVF strategy
5. Implementation of GBVF strategy (2021-2022 targets)
6. Challenges and possible solutions
7. Immediate tasks to be undertaken
8. Recommendations

1. BACKGROUND

- South Africa is a deeply violent society that continues to grapple with the impact of decades of institutionalized racism, sexism, exclusion, structural violence.
- The National Strategic Plan (NSP) on Gender-Based Violence and Femicide (GBVF) seeks to provide a cohesive strategic framework to guide the national response on the hyper endemic GBVF crisis in which South Africa finds itself
- Its development was facilitated by the Interim Gender-based Violence and Femicide Steering Committee (IGBVF-SC)
- Guided by the NSP framework, the KZN Gender Machinery Committee developed a contextualised KZN GBVF-Strategic Implementation Plan (SIP) that analyses and highlights areas of focus for intervention in the province of KZN

- The strategic aim is to localize interventions and involve communities and other stakeholders which are dealing with this scourge at grassroot level.
- In September 2019, the Premier called for a Provincial Emergency Roll-out Plan in response to the call by the President of the South Africa. The Office of the Status of Women, in collaboration with DSD facilitated a sector-wide process to prepare the plan which was approved by Cabinet and implemented across all districts using the Operation Sukuma Sakhe (OSS) model.
- The roll out plan was a placeholder for a more robust Strategic Implementation Plan (SIP) on GBVF to be developed.
- The Province has developed an overarching Gender strategy chiefly underpinned by 12 critical areas of the Beijing Platform for Action (BPfA) which includes violence against women.

- The vision of the KZN Provincial Gender Based Violence and Femicide Strategy says that **“By 2025 KwaZulu-Natal Province shall be resilient united front relentlessly fighting and eradicating any emergence of violence unleashed against women and children.”**



2. KZN GBVF TRAJECTORY

September 2019

- KZN Premier called for a Provincial Emergency Roll-out plan

October 2019

- Conducted a Multi-sectoral Stakeholder Consultation
- Implementation of GBVF programmes

June 2020

- Establishment of the multi-sectoral KZN GBVF Task Team

June 2020

- Developed a Conceptual Framework based on literature review

Jul-Sept 2020

- Conducted a Multi-sectoral Stakeholder Consultation

September 2020

- First draft presented to the Gender Machinery

December 2020

- Conducted Stakeholder Consultation with CSO and PGM
- Launched the Final Provincial GBVF Strategic Implementation Plan

Jan 2021

- Established the Provincial GBVF Technical Working Group

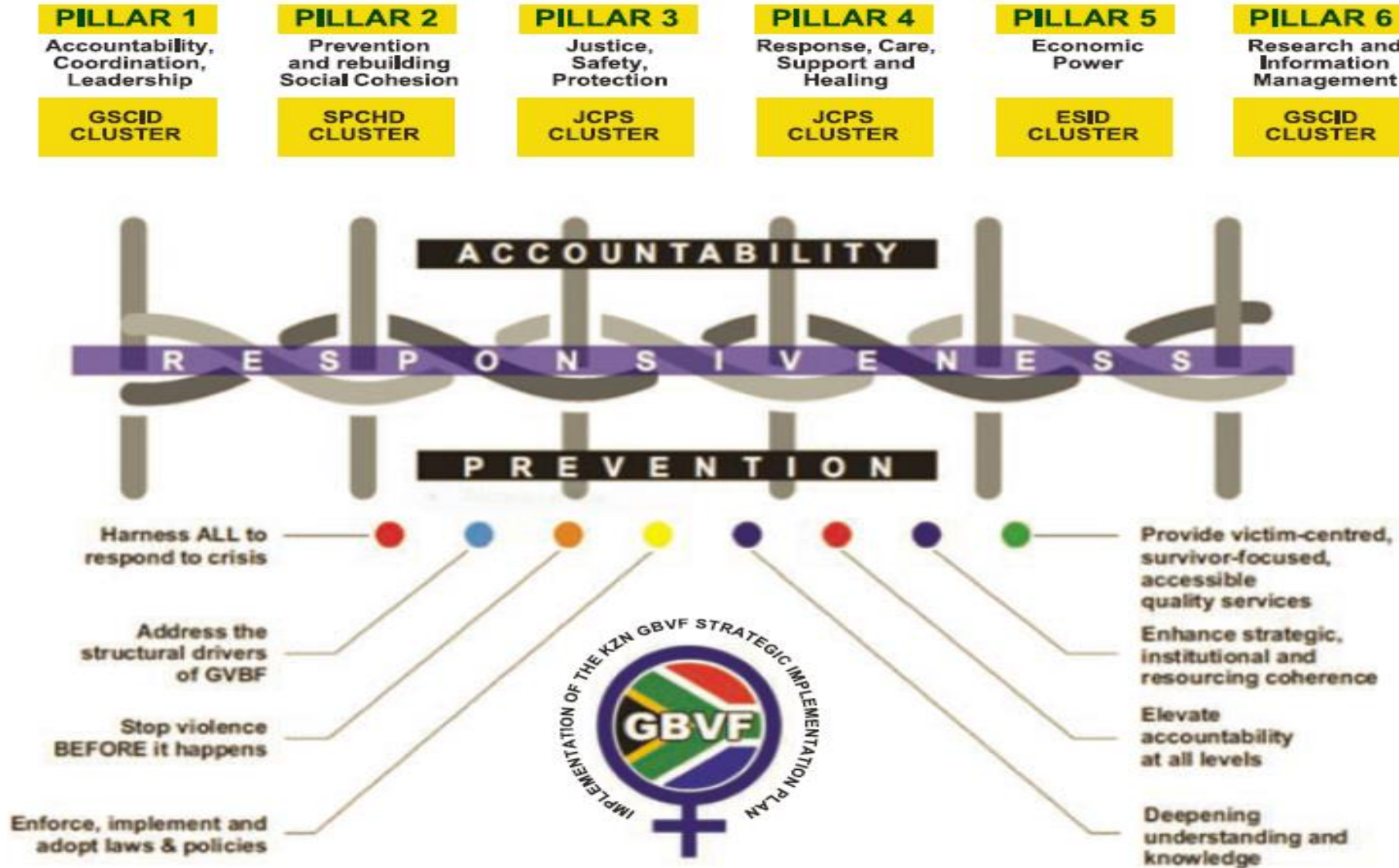
Feb 2021

- Preparation for District Orientation workshops

April- June 2021 and beyond

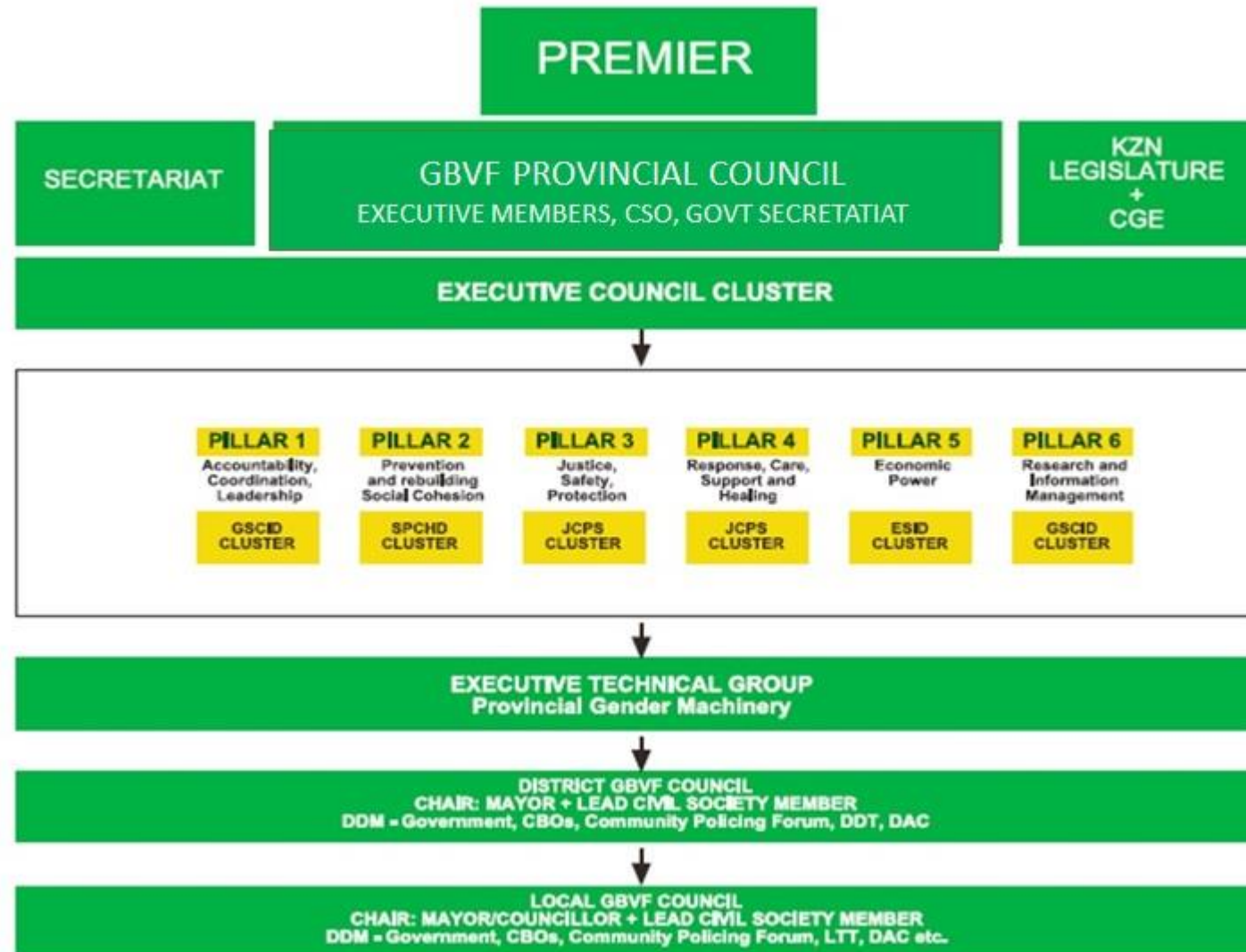
- Conduct District Orientation workshops and execute immediate strategic tasks

3. SUMMARY OF KZN GENDER BASED VIOLENCE AND FEMICIDE STRATEGY





4. INSTITUTIONALIZATION OF GBVF STRATEGY



5. THE IMPLEMENTATION OF GBVF STRATEGY

- The Provincial GBVF Strategic Implementation Plan is implemented by all departments, municipalities, civil society organization as well as private sector companies within KZN province.
- All departments and municipalities have designated Gender focal points/persons who oversee the implementation and mainstreaming of GBVF programmes in line with the KZN Provincial GBVF Strategic Implementation Plan.
- The implementation of the GBVF Strategic Implementation Plan is informed by the strategic priorities as identified by lead departments of clusters and further guided by Annual plans which have been derived from the detailed Implementation Framework.
- Gender Focal points/persons are members of the KZN Provincial Gender Machinery (PGM) which meets on quarterly basis as coordinated by the Office on the Status of Women and Children (OTP) which structure oversees the implementation of the Provincial GBVF Strategic Implementation Plan.
- The Office of the Premier monitors the extent to which lead departments implements the strategic priorities including presenting GBVF report to respective clusters of KZN Executive Council.

IMPLEMENTATION OF THE STRATEGY (2021-2022 TARGETS)CONT'D

| PILLAR | CLUSTER AND LEAD DEPARTMENT | KEY INTERVENTIONS | NUMBER OF ACTIVITIES |
|---|---|--|----------------------|
| PILLAR 1: ACCOUNTABILITY, COORDINATION AND LEADERSHIP | GSCID CLUSTER LEAD: OTP | Strengthen Leadership and accountability across government and society to effectively respond to the GBVF crisis in a strategically and institutionally coherent way with adequate technical and financial resources | 6 |
| | | Effective multisectoral coordination and collaboration across different tiers of government and sections of society based on relationships of trust that give effects to the pillars of the Provincial Implementation Plan | 1 |
| PILLAR 2: PREVENTION AND REBUILDING OF SOCIAL COHESION | SOCIAL CLUSTER LEAD: EDUCATION | Strengthen the delivery capacity of South Africa to roll out effective prevention programmes | 2 |
| | | Change behavior and social norms that drive GBV with key groups using a variety approaches | 4 |
| | | Transform toxic masculinities driving GBVF perpetration | 2 |

IMPLEMENTATION OF THE STRATEGY (2021-2022 TARGETS) CONT'D

| PILLAR | CLUSTER AND LEAD DEPARTMENT | KEY INTERVENTIONS | NUMBER OF ACTIVITIES |
|---|---|---|----------------------|
| PILLAR 2: PREVENTION AND REBUILDING OF SOCIAL COHESION | SOCIAL CLUSTER LEAD: EDUCATION | Harness approaches to prevention that facilitate integration and deepen impact | 5 |
| | | Restore human dignity, build caring and safe communities that is responsive to individual and collective trauma | 4 |
| PILLAR 3: PROTECTION, SAFETY AND JUSTICE | JCPS CLUSTER LEAD: COMMUNITY SAFETY AND LIAISON | Improve access to survivor support services through a victim centric criminal justice services that is sensitive to and meets their needs | 3 |
| | | Strengthen capacity within the CJS to address impunity and facilitate justice for GBV survivors | 6 |
| | | Amend legislation related to GBVF areas, build into legislative reforms initiated under the Emergency Response Action Plan | 1 |

IMPLEMENTATION OF THE STRATEGY (2021-2022 TARGETS) CONT'D

| PILLAR | CLUSTER AND LEAD DEPARTMENT | KEY INTERVENTIONS | NUMBER OF ACTIVITIES |
|---|-------------------------------|---|----------------------|
| PILLAR 4: RESPONSE, CARE SUPPORT AND HEALING | ESCID CLUSTER LEAD: DSD | Strengthen existing response, care and support services that are victim centered, survivor focused, and trauma informed to facilitate recovery and healing | 8 |
| | | Strengthened existing response, care and support services by the state and civil society in ways that are victim centred and survivor focused to facilitate recovery and healing. | 3 |
| | | Secondary victimisation is eliminated through addressing specific individual and systemic factors that drive it. | 4 |
| | | Victims feel supported by the system to access the necessary psychosocial, material and other support required to assist them with their healing. | 4 |
| | | Strengthened community and institutional responses to provide integrated care and support to GBV survivors and their families that take into account linkages between substance abuse and HIV and AIDS. | 3 |

IMPLEMENTATION OF THE STRATEGY (2021-2022 TARGETS) CONT'D

| PILLAR | CLUSTER AND LEAD DEPARTMENT | KEY INTERVENTIONS | NUMBER OF ACTIVITIES |
|--|-----------------------------|--|----------------------|
| PILLAR 5: ECONOMIC EMPOWERMENT | JCPS CLUSTER LEAD: EDTEA | Make workplace safe and violent free for all women | 2 |
| | | Accelerate initiatives to address women's unequal economic and social position | 4 |
| PILLAR 6: RESEARCH AND INFORMATION MANAGEMENT SYSTEMS | GCSID CLUSTER LEAD: OTP | Policy interventions by the state, private and other key sectors rolled out towards eliminating the impact of the economic drivers of GBV on all women | 11 |
| | | Strengthen information and research base to address systemic challenges to facilitate effective strategic solutions and evidence-based responses to GBVF | 4 |
| | | | |



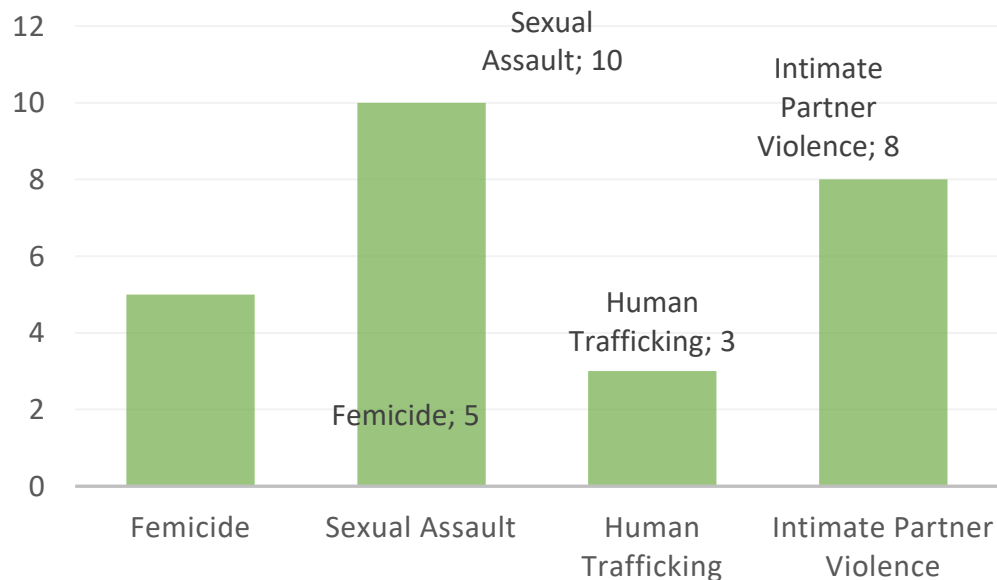
6. CHALLENGES AND POSSIBLE SOLUTIONS

| CHALLENGE | POSSIBLE SOLUTION |
|--|---|
| 1. Shortage of psychologists for purposes of clinical and forensic assessments. - Department of Health to urgently assist with the appointments as indicated. | 1. That the GBVF Provincial Technical Working Group shall by 30 September 2021 conducted a province-wide assessment on the state of clinical and forensic psychologists in all Thuthuzela Care Centres. 2. That a comprehensive report shall then be served before the KZN GBVF Council for a decision to beef up this capacity. |
| 2. Shortage of DNA Test Kit and Laboratory | 2. That the immediate engagement be undertaken between Minister of Justice and KZN Premier on challenges and measures to unbundle delays at the Pretoria laboratory. |
| 3. The growing number of GBVF cases including the withdrawn ones without informing the victim | 1. That a province-wide GBVF screening shall be launched and undertaken during the Men's month (July 2021) using a standardized tool in all state facilities, communities, workplaces, etc. (in the same manner COVID-19 screening is undertaken) 2. That a united front shall be formed on mass education instilling positive behavioral change including cultural practices. 3. That GBVF united front is promoting a campaign to identify and report such cases for them to be reinstated on the court roll. |

Provincial Gender Based Violence and Femicide Technical Working Group

The GBVF Rapid Response team also known as the GBVF Technical Working Group meets Quarterly and every time there is a case reported to the OTP or through departments. The GBVF Technical group has had success stories in the joint intervention of reported cases.

Types of GBVF Cases



KWAZULU-NATAL PROVINCE

OFFICE OF THE PREMIER
REPUBLIC OF SOUTH AFRICA



Premier Sihle Zikalala's communications administrator brutally murdered

Please join us at the Chatsworth court on Wednesday with or without placards demanding that no bail be given to perpetrators of Gender Based and Domestic Violence, Rape and Molestation.

Please come with your placard although cards will be made.

* Posted on behalf of the victim
* Covid-19 Protocols apply



Ezivuthayo Emaputaland
17 m

Sekutholwe isidumbu sowesifazane ehlathini eduze kwestamkoko esikhulu saseThekwini. Ugwazwe esifubeni washiywa egunyulwe isingezansi. Ubuso bubukeka sengathi ubekhala. Kusolwa nokuthi udlwenguliwe.

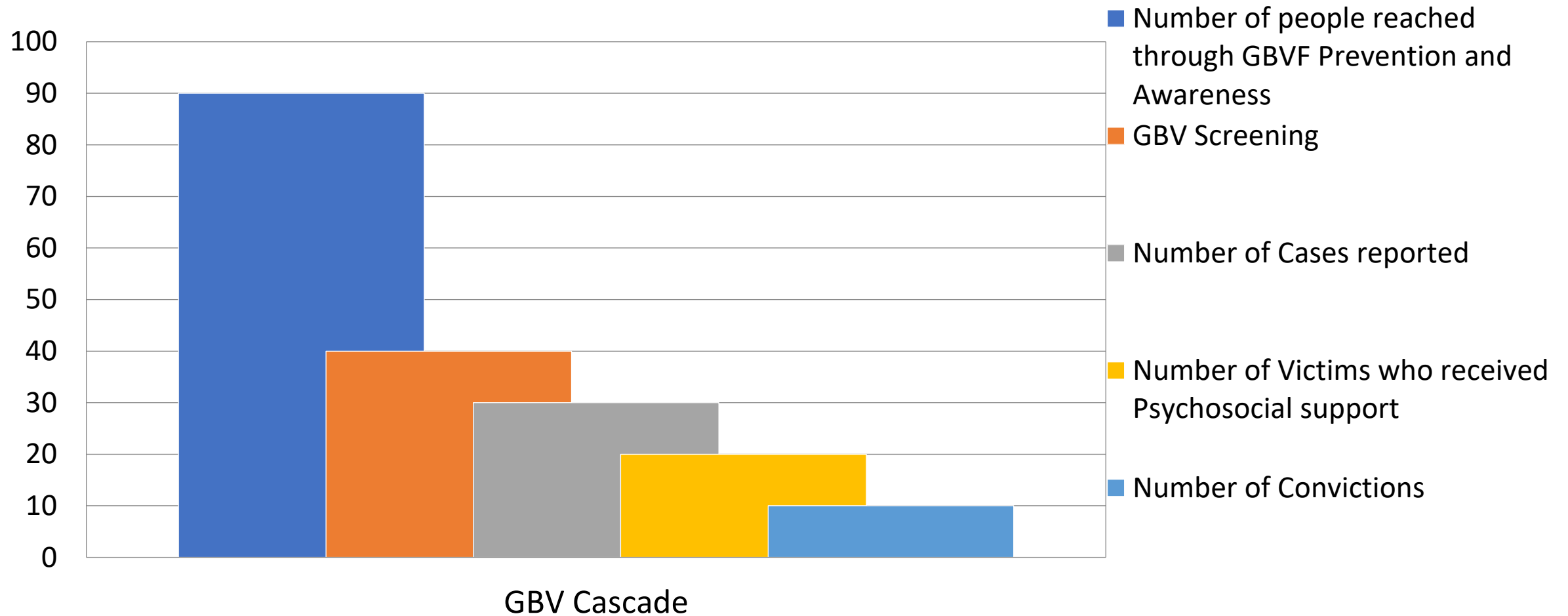


EZIVUTHAYOEMAPUTALAND.COM
Ezivuthayo Emaputaland

5-YEAR PERFORMANCE FRAMEWORK

| Districts | Total Population in KZN | 90% of PSE | | | | |
|----------------|-------------------------|--|---------------------------|-------------------------------------|---|-------------------------|
| | | Number of people reached through GBVF Prevention and Awareness | 40% of PSE GBVF Screening | 40% of PSE Number of Cases Reported | 40% of PSE Number of victims who received psychosocial support services | Number of convictions |
| Amajuba | 531 107 | 477 996 | 191 199 | 191 199 | 191 199 | 191 199 |
| eThekwini | 3 661 911 | 3 295 720 | 1 318 288 | 1 318 288 | 1 318 288 | 1 318 288 |
| Harry Gwala | 502 265 | 452 039 | 180 815 | 180 815 | 180 815 | 180 815 |
| iLembe | 657 612 | 591 851 | 236 740 | 236 740 | 236 740 | 236 740 |
| King Cetshwayo | 971 135 | 874 022 | 349 609 | 349 609 | 349 609 | 349 609 |
| uGu | 789 953 | 710 958 | 284 383 | 284 383 | 284 383 | 284 383 |
| uMgungundlovu | 1 111 872 | 1 000 685 | 400 274 | 400 274 | 400 274 | 400 274 |
| uMkhanyakude | 689 090 | 620 181 | 248 072 | 248 072 | 248 072 | 248 072 |
| uMzinyathi | 551 177 | 496 059 | 198 424 | 198 424 | 198 424 | 198 424 |
| uThukela | 706 808 | 636 127 | 254 451 | 254 451 | 254 451 | 254 451 |
| Zululand | 892 310 | 803 079 | 321 232 | 321 232 | 321 232 | 321 232 |
| TOTAL in KZN | 11 065 240 | 9 958 716 | 3 983 486 | 3 983 486 | 3 983 486 | 3 983 486 ¹⁷ |

PROPOSED GENDER BASED VIOLENCE AND FEMICIDE CASCADE



7. IMMEDIATE TASKS TO BE UNDERTAKEN

- Establishment of District Technical Working Group which shall provide technical support to District Gender Machineries.
- Vulnerable groups Focal Points from departments must submit reports to District Municipality Vulnerable Groups Focal Points for consolidation and reporting to the Office of the Premier.
- The Social Development Population Unit in partnership with DUT and the Office of the Premier shall conduct a colloquium on why are men angry and hurting women and children in July 2021.
- Revitalisation of District Gender Machinery structures.
- Capacity building and mentorship of Gender Focal Points
- GBVF Community conversations with men and young boys in taxi ranks, hostels, traditional healers and traditional leaders.
- Strengthen partnerships with tertiary institutions to support evaluations and research.
- Strengthen partnerships with the Private sector for improved coordination of resources ring fenced to fight scourge of GBVF in KZN province.
- Development of a GBVF Nerve Centre supported by UNFPA
- Reinforce stakeholder and community mobilization as well as advocacy on GBVF.



RECOMMENDATION

- It is recommended for the PCA to note the KZN Government posture on Provincial Gender Based Violence and Femicide (GBVF) in KZN.

Annexure A

**IMPLEMENTATION OF THE STRATEGY (2021-2022 TARGETS) AND AD
HOC INTERVENTIONS MADE**

PILLAR ONE: ACCOUNTABILITY, COORDINATION AND LEADERSHIP

| KEY ACTIVITIES | JANUARY TO MARCH PROGRESS REPORT |
|---|---|
| Development of a Provincial coordinating structure undergirded by the legislative mandate to drive multisectoral response to GBVF | The OTP is coordinating the GBV Technical Committee which meets quarterly. The 5-year GBV plan have been developed and awaiting approval by Cabinet. Operational arrangements, including budgets in place, these have been implemented through the 5-year plan. |
| Put mechanism and processes in place to hold state and societal leadership accountable for taking firm stand against GBV | The OTP has the office responsible for religious affairs. The office has coordinated prayers and workshops and is working the fraternity for solutions on GBV through talks, seminars and walks. |
| All public servants are vetted | In most departments, officials within have been vetted. Screening of all candidates prior their appointments is in place in terms of recruitment policy i.e. fingerprints etc. was done at DARD and DOT |
| Put mechanism and processes in place to hold state and societal leadership accountable for taking firm stand against GBV | The NPA is prosecuting cases provided with is enough evidence and a reasonable prospect of success. The Rehabilitation of offenders should be referred to DCS. |

PILLAR ONE: ACCOUNTABILITY, COORDINATION AND LEADERSHIP

| KEY ACTIVITIES | JANUARY TO MARCH PROGRESS REPORT |
|---|--|
| Provision of oversight by Parliament Committees | The QOL Committee conducts the Oversight on programmes for women. The oversight meetings are held quarterly. The QOL Committee |
| Development of a partnership model, funding and resourcing plan to respond to the crisis by locating the response in locally based structures, activism and agency within communities | The funding model has not yet been developed. DSD still continue to fund NGOs and shelters which deals with GBV. |
| Integration of PSP priorities in all relevant departmental and municipal plans and frameworks | DOT has targeted GBV in 2021/2022 financial year into an Annual Performance Plan. Gender-based initiatives will be conducted during the year, inclusive of awareness raising workshops addressing G The GBV targets are incorporated into the Departmental Gender Strategic Plans |
| | DARD has spent 98 % of budget allocated for women and gender/ GBV programs during this quarter. |
| Provision of oversight by Parliament Committees | The QOL Committee conducts the Oversight on programmes for women. The oversight meetings are held quarterly. |

PILLAR ONE: ACCOUNTABILITY, COORDINATION AND LEADERSHIP

| KEY ACTIVITIES | JANUARY TO MARCH PROGRESS REPORT |
|--|--|
| Hold private and public sector accountable for the development and roll out of sexual harassment policies and workplace strategies | <p>The Office of The Premier coordinated the Consultative workshop on Women's Charter with an aim to review Women's Charter in order to take stock of achievements of garnered since 1994 and to assess systematic weakness that continue to impend the advancement and realisation of Gender Equality in South Africa. 120 Women to participate.</p> <p>Provincial Treasury held a Distribution of Sexual Harassment Policy review on 23 March as part of Induction of new appointees. It was a virtual seminar.</p> |
| Rollout of a Provincial response to GBVF through local structures with optimal institutional arrangement and resources across government and all sectors with focus on prevention and psychosocial support | <p>The District Development Model have been established in all ten Districts and the Metro in the Province. Further through DDM, the following clusters have been established: The Justice, Crime Prevention and Security Cluster (JCPS) and the Social Protection, Community and Human Development Cluster (SPCHD) to address amongst other issues, the social issues within communities.</p> <p>The Rapid Response teams established by COGTA has separate functions that deals with public protests. The provincial Rapid Response Team (RRT) and municipal Rapid Response Teams are specifically responsible for service delivery and other related public protests.</p> |

PILLAR TWO: PREVENTION AND REBUILDING OF SOCIAL COHESION

| KEY ACTIVITIES | JANUARY TO MARCH PROGRESS REPORT |
|---|--|
| Develop a comprehensive Provincial Prevention Strategy | <p>The GBVF Task Team has developed overarching messages as part of the strategy. The messages are reflected on billboards through various MEC's. There are also messages on social media.</p> <p>The eThekwini Communications Department publishes GBV Awareness Programmes on different platforms e.g social media, Ezasegagasini gazette and the intranet.</p> <p>Most department have done media campaigns. Departments are encouraged to implement media campaigns on a monthly basis.</p> |
| Train and support community capacity to deliver GBVF prevention interventions | <p>The United Nations Population Fund (UNFPA) is appointed a service provider to roll-out GBVF training. Capacity building has been enlisted as one of the key deliverables to be undertaken by UNFPA consultants at district level.</p> <p>A PGM Meeting was held on 25 March to discuss and train GFP's on 5-year plan on GBV. The activists were trained on how to implement the plan based on the Implementation Framework ,</p> <p>District coordinators were trained at uMgungundlovu District in partnership with HIV Unit on 23 March 2021.</p> <p>Training for people with disability was made and done on 16 March at eThekwini, KwaMashu, targeting 150 people. Manuals were developed and braille printed.</p> |

PILLAR TWO: PREVENTION AND REBUILDING OF SOCIAL COHESION

| KEY ACTIVITIES | JANUARY TO MARCH PROGRESS REPORT |
|---|---|
| Adapt and roll out school-based GBV prevention programmes | <p>A programme by DCSL hosted a programme a School Safety Programme on Gender Based Violence on 30</p> <p>March 2021 at Ugu : Ndumakude Hall Umzumbé ward 13 to create a safety environment for women and vulnerable groups About 250 people attended</p> |
| Implement programmes to prevent GBV and eliminate the scourge of GBV in the Post-School Education and Training (PSET) | <p>A policy framework has been formulated to deal with GBV at schools. Policy Framework to address Gender-Based Violence in the PSET system has been tabled</p> |
| Implement evidence based behaviour change interventions with targeted communities | <p>DCSL held a GBV programme on behavioral change at eThekweni at Verulam on 11 February 2021 programme was conducted in partnership with all JCPS cluster departments and stakeholders.</p> <p>A workshop as intervention for traditional leaders was held at KwaNdengezi Gender Based Violence & Human Rights Dialogue with Traditional Leaders. The dialogue was meant to create a working relationship between traditional leaders and the community on human rights, addressing the challenges of abuse of human rights through traditional practices.</p> |

PILLAR THREE: PROTECTION, SAFETY AND JUSTICE

| KEY ACTIVITIES | JANUARY TO MARCH PROGRESS REPORT |
|---|--|
| Increase knowledge, education and awareness about Human Trafficking / Harmful Traditional Practices / Pornography / Prostitution and Brothels to empower all communities. | <p>23 February 2021- Sanitary Dignity Campaign for female learners took place at Mdlazi Primary School – The programme was implemented by uGu District Municipality in partnership with KZN Liquor authority. 144 young female learners were reached. The Sanitary dignity Campaign means that every girl child and women in the country can manage their menstruation in a dignified manner.</p> <p>Lifeline Awareness Campaign</p> <p>Lifeline has been spreading anti-GBV themes and messages through GBV Programmes held which includes:</p> <ul style="list-style-type: none">• Types of GBV• Reporting GBV• Services Available• Court Processes• Human Trafficking <p>These Education and Awareness campaigns help debunk the myths and misconceptions around GBV.</p> |

PILLAR FOUR: RESPONSE, CARE, SUPPORT AND HEALING

| KEY ACTIVITIES | JANUARY TO MARCH PROGRESS REPORT |
|---|--|
| Standardization approach to sheltering adopted for funding and services | Percentage of female who benefit from improved social protection system 1787. GBV victims accessing care and support services 1544 and number of victims of Substance abuse accessing support programmes is sitting at 925 through DSD. |
| Establishment of local level rapid response teams in every municipality with clear protocols for child protection (all departments) to amplify the response to the needs of victims. | DARD has wellness interventions are in place in terms of the approved APP |
| Establishment of local level rapid response teams in every municipality with clear protocols for child protection (all departments) to amplify the response to the needs of victims. | eThekwini Municipality has a confidential 24 hours Careways wellness programme in place where survivors are free to consult for assistance when dealing with personal stress, family matters, work-related matters, financial matters as well as legal matters at the City's cost. DARD has an approved Policy in place- DOT Employee Health and Wellness provides psychosocial support and intervene by referring officials who needs assistance to psychologists. The unit is focusing on raising awareness and education on issues such as gender-based violence and COVID 19. Virtual sessions in response to COVID 19 pandemic have been conducted dealing with grief targeting officials who have lost their loved ones due to COVID 19. |

PILLAR FIVE: ECONOMIC EMPOWERMENT

| KEY ACTIVITIES | JANUARY TO MARCH PROGRESS REPORT |
|---|--|
| Develop, implement, support and monitor programmes for equitable job creation, representation and ownership by women | <p>Department of Works - There are 25 projects were awarded to women including emergency health projects for Covid 19</p> <p>Support Provided to Women - 04 women were employed by uGu District EPWP on a temporary bases in different projects around the district to assist in providing immediate poverty relief to women headed households in the district</p> |
| Public private partnerships are established to facilitate economic opportunities for women leaving abusive relationships; | Celebration of International Women's Day took place at Mkhoba Hall on 8 march in Umuziwabantu Municipality. The celebration was initiated by KDL foundation in partnership with Umuziwabantu Municipality. 30 women attended the celebration. |
| Workplace intervention for GBV support developed and rolled out in public and private sector | eThekwini has held two wellness interventions. In DOT the cases for GBV are referred to Employee Health and Wellness unit for intervention in providing support to victims. |
| Develop sexual harassment policies in workplaces across the public and private sectors | The policies are accessible on Intranet and are being presented on a regular basis and as per request by different Units |
| Monitoring of GRPBM&EA roll out in all departments and municipalities | <p>The OTP continues to monitor GRPBM&EA roll out in all departments and municipalities and a report is prepared by OTP.</p> <p>GBV awareness programmes are implemented at ward level, zonal level and regional level and are also presented at the DDM Technical Hub. GBV targets are incorporated into the Departmental Gender Strategic Plans</p> |

PILLAR FIVE: ECONOMIC EMPOWERMENT

| KEY ACTIVITIES | JANUARY TO MARCH PROGRESS REPORT |
|---|--|
| Develop, implement, support and monitor programmes for equitable job creation, representation and ownership by women | <p>Department of Works - There are 25 projects were awarded to women including emergency health projects for Covid 19</p> <p>Support Provided to Women - 04 women were employed by uGu District EPWP on a temporary bases in different projects around the district to assist in providing immediate poverty relief to women headed households in the district</p> |
| Public private partnerships are established to facilitate economic opportunities for women leaving abusive relationships; | Celebration of International Women's Day took place at Mkhoba Hall on 8 march in Umuziwabantu Municipality. The celebration was initiated by KDL foundation in partnership with Umuziwabantu Municipality. 30 women attended the celebration. |
| Workplace intervention for GBV support developed and rolled out in public and private sector | eThekwini has held two wellness interventions. In DOT the cases for GBV are referred to Employee Health and Wellness unit for intervention in providing support to victims. |
| Develop sexual harassment policies in workplaces across the public and private sectors | The policies are accessible on Intranet and are being presented on a regular basis and as per request by different Units |
| Monitoring of GRPBM&EA roll out in all departments and municipalities | <p>The OTP continues to monitor GRPBM&EA roll out in all departments and municipalities and a report is prepared by OTP.</p> <p>GBV awareness programmes are implemented at ward level, zonal level and regional level and are also presented at the DDM Technical Hub. GBV targets are incorporated into the Departmental Gender Strategic Plans</p> |



IMPLEMENTATION OF THE STRATEGY (2021-2022 TARGETS) AND AD HOC INTERVENTIONS MADE.

| SEXUAL CRIMES REPORTED TO THE POLICE 2020/21 | | | | | |
|--|---------------|---------------|---------------|---------------|-------------|
| | Q1 2020/21 | Q2 2020/21 | Q3 2020/21 | Q4 2020/21 | |
| | Apr-June 2020 | Jul-Sept 2020 | Oct-Dec 2020 | Jan-Mar 21 | TOTAL |
| Rape | 1160 | 1625 | 2169 | 1722 | 6676 |
| Sexual Assault | 206 | 297 | 386 | 298 | 1187 |
| Attempted Sexual Offences | 31 | 51 | 59 | 37 | 178 |
| Contact Sexual Offences | 20 | 56 | 47 | 43 | 166 |
| TOTAL SEXUAL OFFENCES | 1417 | 2029 | 2661 | 2100 | 8207 |



IMPLEMENTATION OF THE STRATEGY (2021-2022 TARGETS) AND AD HOC INTERVENTIONS MADE.

| KZN POLICE STATIONS NATIONAL RANKINGS FOR RAPE CASES REPORTED 2020/21 | | | | | |
|---|----------------|---------------|------------|----------------|---------------|
| Q1 2020/21 | | | Q2 2020/21 | | |
| RANK | POLICE STATION | DISTRICT | RANK | POLICE STATION | DISTRICT |
| 1 | INANDA | ETHEKWINI | 1 | INANDA | ETHEKWINI |
| 2 | PLESSISLAER | UMGUNGUNDLOVU | 10 | UMLAZI | ETHEKWINI |
| 9 | KWADUKUZA | ILEMBE | 21 | PLESSISLAER | UMGUNGUNDLOVU |
| 13 | UMLAZI | ETHEKWINI | 23 | NTUZUMA | ETHEKWINI |
| 22 | MOUNTAIN RISE | UMGUNGUNDLOVU | | | |
| 23 | KWA MBONAMBI | KCD | | | |
| 28 | EMPANGENI | KCD | | | |
| Q3 2020/21 | | | Q4 2020/21 | | |
| RANK | POLICE STATION | DISTRICT | RANK | POLICE STATION | DISTRICT |
| 1 | INANDA | ETHEKWINI | 2 | INANDA | ETHEKWINI |
| 3 | UMLAZI | ETHEKWINI | 4 | UMLAZI | ETHEKWINI |
| 9 | EMPANGENI | KCD | 20 | ESHOWE | KCD |
| 13 | PLESSISLAER | UMGUNGUNDLOVU | 21 | MADADENI | AMAJUBA |

Summary of Annexure A

- The sexual assault numbers reflected in the above slides are not a true reflection of the total number of sexual assault cases in our communities. There are lots of cases of sexual assault which are not reported to designated stakeholders.
- Departments, municipalities and civil society organizations conduct GBVF awareness campaigns with the aim to raise awareness and education to community members regarding their rights and responsibilities.
- GBVF screening shall be conducted by all implementing departments, municipalities and civil society organization in order to find and support all victims of GBVF.

Annexure B

**GBVF INTERVENTIONS MADE IN QUARTER 4 OF 2020/2021 AND
QUARTER 1 OF 2021/2022**



2021/22 ISIBAYA CASINO SUPPORTED GBVF INTERVENTIONS

| Proposed Interventions | Qty | Unit Cost | Estimated budget |
|--|---|--------------|----------------------|
| Activity 1: Accelerate the number of victim-friendly police stations in KZN province | 50 police stations | R11 440,00 | R 572 000,00 |
| Activity 2: Psychosocial support for Gamblers to prevent GBVF | 200 female and male gamblers | R2 066,67 | R 620 000,00 |
| Activity 3: GBVF Community conversations with men and young boys in taxi ranks, hostels, traditional healers and traditional leaders | 10 000 men, boys, traditional leaders, taxi drivers | R 180,60 | R 1 806 000,00 |
| Activity 4: Community based anti-GBV campaigns by 110 Ambassadors | 66000 people screened for GBV by Ambassadors | R 60,33 | R 3 982 000,00 |
| Activity 5: Socio Economic Empowerment programme for women in shelters | 500 women in shelters | R 1 920,00 | R 960 000,00 |
| Activity 6: Development of A GBVF App for victims. | 1 mobile app | R 300 000,00 | R 300 000,00 |
| Activity 7: Evaluation of the all supported GBV Interventions contained in this proposal. | Evaluation of each GBVF intervention area | R 760 000,00 | R 760 000,00 |
| | | | R9 000 000,00 |



2020/2021 QUARTER 4 INTERVENTIONS

| INTERVENTION | ACHIEVEMENTS | CHALLENGES | TURNAROUND |
|---------------------------------|---|---|--|
| Shelter and White Door Services | <p>There are 8 shelters that are operating within the eThekweni Metro.</p> <p>There are 8 White Door sites that are presently operating within the eThekweni South District. A ninth White Door site has been earmarked for the Ngonyameni Area in Umlazi Ward 84. 6 are fully functional.</p> <p>92 victims of Gender Based Violence received psychosocial services at the White Doors and Shelters</p> | <p>No challenges noted</p> <p>Two house mothers are experiencing challenges with their health and cannot admit residents now.</p> | <p>N/A</p> <p>Strengthening of services in Chatsworth and Umlazi as housemothers continue to be ill.</p> |



2020/2021 QUARTER 4 INTERVENTIONS...CONT'D

| INTERVENTION | ACHIEVEMENTS | CHALLENGES | TURNAROUND |
|--------------------------------------|---|---|--|
| Expansion of GBV Services – Lifeline | <p>An additional 30 social workers are presently rendering services at Thuthuzela Care Centres (a 24-hour one stop site to provide medical, therapeutic and legal services to victims of sexual assault), SAPS Victim Friendly Rooms and other designated VEP sites.</p> <p>This is in addition to the 6 social workers and 15 social auxiliary workers that were funded through a previous service level agreement to render psychosocial services to adult victims at the Thuthuzela Care Centres. This SLA also makes provision for rendering of services to children who are victims of sexual assault.</p> <p>They render extensive psychosocial interventions to victims of crime and violence.</p> <p>92 victims received psychosocial services</p> | <p>Clients do not pursue protection orders and criminal charges against the perpetrator.</p> <p>The initial SLA with Lifeline to station social workers at Thuthuzela Centres ends in March 2021.</p> | <p>Intensified counselling interventions to be provided to clients to encourage them to ensure measures of self-protection against the perpetrators.</p> |



2020/2021 QUARTER 4 INTERVENTIONS...CONT'D

| INTERVENTION | ACHIEVEMENTS | CHALLENGES | TURNAROUND |
|-------------------------------------|---|---|---|
| Prevention and Awareness Activities | <p><u>Lifeline Awareness Campaign</u></p> <p>Lifeline has been spreading anti-GBV themes and messages through GBV Programmes held which includes:</p> <ul style="list-style-type: none">▪ Types of GBV▪ Reporting GBV▪ Services Available▪ Court Processes▪ Human Trafficking <p>These Education and Awareness campaigns help debunk the myths and misconceptions around GBV.</p> | <p>Due to COVID 19 pandemic it has been difficult to hold large scale awareness campaigns, participants are also reluctant to sign registers.</p> | <p>By using a larger platform such as radio and through regular time slots, Lifeline has been able to hold weekly awareness programmes via this media platform.</p> |



2020/2021 QUARTER 4 INTERVENTIONS...CONT'D

| INTERVENTION | ACHIEVEMENTS | CHALLENGES |
|------------------------------------|---|---|
| Psychosocial Support Interventions | <p>Social Development and Lifeline undertakes trauma debriefing sessions at TCC sites and Victim Friendly Facilities at SAPS.</p> <ul style="list-style-type: none">▪ They reached victims where they rendered face to face counselling sessions in respect of domestic violence, sexual assault and intimate partner violence. Further to this they also conduct home visits to ensure the safety and wellbeing of clients that are at risk. <p>Childline also undertakes trauma debriefing sessions at TCC sites with children.</p> | <p>There were challenges in respect of clients not wanting to travel due to financial constraints or they could not travel for fear of contracting the virus whilst using public transport.</p> |

THANK YOU

